



**BERLIN SCHOOL OF  
BUSINESS & INNOVATION**

---

part of GUS Germany GmbH (GGG)

Brief for the position of  
Provost



**A world of possibilities**



**Designed for future industry leaders and based in multiple locations across Europe, the Berlin School of Business and Innovation is an accessible and inclusive high-quality education provider that fosters innovation, active collaboration and critical thinking among its diverse community of students, faculty, alumni and partners.**



center Struve

LOX



HIER  
NIEMANDE  
GIBT

OTTO VON GUERARDY  
6  
KONTOR N

Parkeplatz  
Hier ist  
kein Parkieren  
mit Einweisung

# About Us

IDRI  
International Development  
Research Institute



Study at

**BSBI**



**PPA**  
BUSINESS SCHOOL  
La Grande Ecole en Alternance

---

# Welcome

---

Many thanks for your interest in applying for the Provost position at the Berlin School of Business and Innovation (BSBI). BSBI, although with a relatively short history of approximately 7 years, has achieved tremendous growth and an amazing expansion not only within Germany but also in international locations such as France and Spain. A significant part of its success is due to the continuous dedication of the senior management to quality enhancement and improvement. It is also astonishing and at the same time challenging to work and operate in a vast international community of more than 100 nationalities of students and staff.

Nearly every day there is something to celebrate. For an academic leader it is also very rewarding to notice that they can find in BSBI a safe harbour that promotes creativity and rewards hard work. Talent, skills and qualifications are integral, however, one of the most significant components of the Provost position is dedication, the ability to prioritise and the task of leading people that come from different backgrounds and disciplines.

If you feel you can join our community and be a part of our vision, then we all look forward to receiving your application.

**Sagi Hartov**  
**Co-Founder and**  
**Executive Chairman of BSBI**

---

# Berlin School of Business & Innovation

---

Located in the heart of Berlin and with campuses in Paris, Barcelona, Hamburg and Athens, we are an international business school that offers academic excellence, a member of Global University Systems (GUS) and provide unlimited career opportunities for its students and staff.

## **Mission**

We prepare students for impactful global careers, providing accessible and quality education to cultivate future industry leaders. With a focus on enterprise, leadership and success, our programmes empower students with an entrepreneurial mindset to lead and succeed, fostering an inclusive, innovative and supportive learning environment. Our mission is to shape the future by nurturing exceptional talent and driving positive change in the competitive international business world.

## **Vision**

Our vision is to become the industry leader by fostering academic excellence and providing unparalleled opportunities for students. We aim to excel through guest speaker events, entrepreneurial and scientific publications, innovation, international locations, strategic partnerships and industry memberships, ultimately shaping the future of professional and personal success.

# Our Values

Do you have a design CV?

- **Creative**
- **Dynamic**
- **Forward-thinking**
- **Leadership**
- **Entrepreneurial**



---

# Our school has three concepts at its heart

---

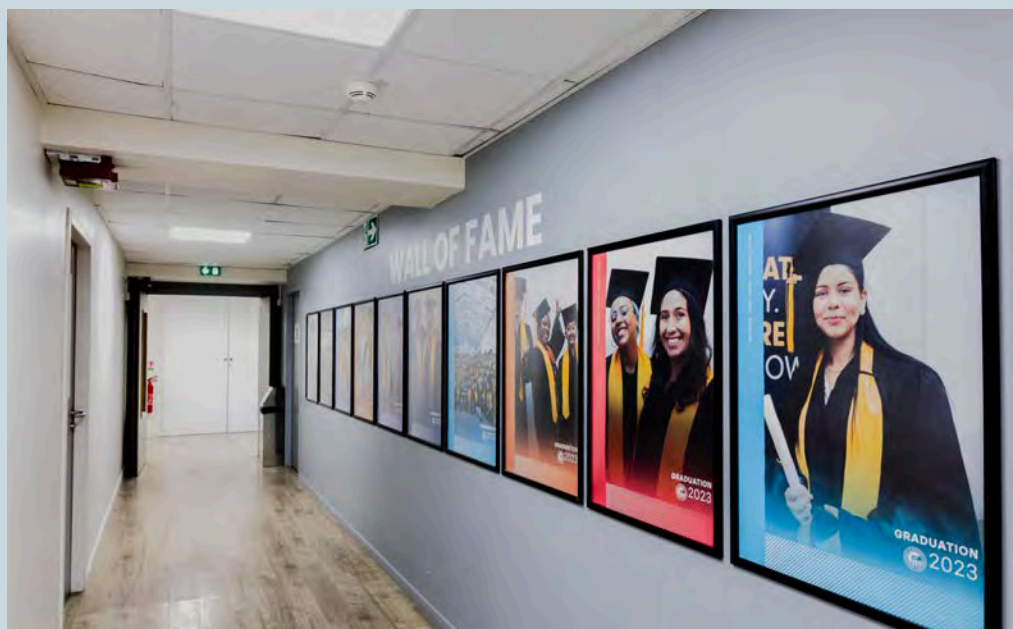
- **Enterprise**
- **Leadership**
- **Success**

Every course we offer is designed with these principles in mind, which is why each programme focuses on improving practical business skills and understanding of industry. We will give students the tools and information that they need for professional success, as well as support from industry-focused academics who are at the top of their field. Students also benefit from our extensive career support, which they can rely on for guidance and advice.

All of our programmes use hands-on teaching methods, such as case studies, visits to exhibitions and businesses, guest speakers and classroom discussions. This means students gain a practical understanding of how the concepts learned on their programme can be applied in real businesses.

BSBI is part of GUS Germany GmbH (GGG), a dynamic network of higher education institutions with more than 15,000 students at locations in Germany, Europe and beyond.

Our mission is to nurture visionary leaders who are capable of driving meaningful impact for society. With a thriving student body of over 15,000+ learners across our various institutions, we offer a wide range of academic disciplines, including business, technology, data science, engineering, sports and the fine arts. Students seeking to enrol in one of our esteemed institutions can choose from a selection of prime locations. Our institutions are located all around Europe (Berlin, Hamburg, Potsdam, Iserlohn, Barcelona, Paris, Amsterdam) as well as Dubai, where we offer the first German degree in the UAE.







## **Awards and Recognitions**

**BSBI are proud to have received a number of nominations and awards that celebrate our dedication to our students and their futures. This recognition celebrates our dedication to transforming education and shaping the future of learning. Explore our accolades and nominations:**

**[Awards and Recognitions - BSBI](#)**

**// Berlin, the greatest cultural extravaganza that one could imagine. //**

David Bowie, Singer

---

# Berlin

---

Berlin is unlike any other city in the world.

Having survived the tumultuous years of World War II and the rise and fall of the Berlin Wall, its rich history has helped to transform it into the epicentre of business, culture, politics and tourism that it is today. With one of the largest economies in the world, a hugely successful startup community, excellent Intercity and international travel connections and a reasonable cost of living, its no wonder so many people choose to live in Berlin.

The capital has become a hot-spot for students, entrepreneurs and young professionals who come to Berlin to learn, grow and achieve success.



---

# Europe's largest education network

---

GUS Germany GmbH — an assembly of individuals driving change, guiding thoughts and envisioning the future.

BSBI is a part of GUS Germany GmbH (GGG), a vibrant network of exceptional higher education institutions with a significant presence in Germany, Europe and beyond. With a collective enrolment of approximately 15,000 students from around the globe, all our institutions share a daring vision: to foster a culture of ingenuity and excellence in education.

Our mission revolves around equipping students with the necessary knowledge and skills to enact positive transformations globally and to nurture forward-thinking leaders capable of profoundly impacting society.

In pursuit of these objectives, we engage in partnerships with distinguished practical collaborators, including Coca-Cola, Universal, Borussia Dortmund, Wayfair and Ritz Carlton, among various others.



## 2023 Key Metrics



## BSBI in Numbers

**7500+**

Students & Alumni Network

**5000+**

Students currently enrolled

**112**

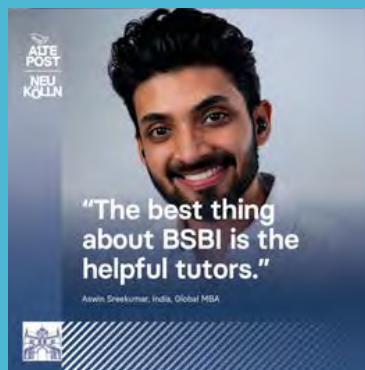
Students & Alumni Nationalities



---

# What our students say

---





---

# The Role

---

**Title: Provost**

**Accountable to: Chief Executive Officer**

**Please note that this role will be based in Berlin**

## **Essential duties and responsibilities**

- Academic Programmes: Policy, planning and oversight of programme development; delivery of instruction; programme evaluation.
- Faculty: Oversee faculty appointments; faculty evaluation; and faculty development, sabbaticals.
- Student Learning: Policy, planning and oversight of the documentation and assessment of student learning and achievement.
- Represents the College at appropriate academic bodies, both internal and external to the College.
- Budget: Develops resource needs and budget for academic programmes; responsible for budget allocations.
- Enrolment: Support enrolment related activities as needed.
- Compliance: Leads the College in compliance with the academic requirements of the regulations in all states where the College offers programmes from.



## Other duties and responsibilities

- Keep abreast of current developments in state and federal governmental regulations, court decisions and higher education practices related to academics.
- Fosters intellectual growth, student learning and scholarly and creative activities by providing academic strategic planning, administrative leadership, direction and evaluation for all academic activities and faculty affairs at the University, providing leadership in internationalising the campus and advancing multidisciplinary scholarship and providing leadership and guidance on diversity initiatives for faculty, staff and students.
- Demonstrates sound fiscal management and empirical-based decision making by overseeing programme development, budgets and facilities of all academic and academic support units.
- Ensures an active and expanding dialogue with external constituencies by encouraging partnerships with external constituents and public organisations, engaging in effective university advancement (including alumni affairs, fundraising and advocacy on behalf of the institution), and facilitating the Public Affairs mission of the College.
- Implements the strategic academic vision by authorising faculty appointments, recommending all promotions and tenure decisions to the CEO, making final decisions about the allocation of academic space, working with the academic team in addressing the educational support needs and extra-curricular priorities for students and with the senior leadership of the College in coordinating and overseeing the overall mission of the University.
- Remains competent and current through self-directed professional reading, developing professional contacts with colleagues, attending professional development courses and attending training and/or courses as required.
- Contributes to the overall success of the College by performing all other duties as needed.
- People who will report to the Provost: Programme Leaders, Exam and Assessment Managers and Registrars.
- Oversight on all lecture appointments.
- Performs other related duties and/or special projects as required and/or assigned.



---

# The Person

---

## Qualification

- PhD level or equivalent.
- Professorial level.

## Previous Experience

- Organisational level leadership experience, proven ability to work cross-institutionally with a significant breadth of research areas in a complex and disaggregated environment.
- Demonstrable experience of developing and delivering an organisation wide strategy or strategies with success.
- Leadership experience of having inspired an enduring cultural change, inclusive behaviours and increased diversity.
- Demonstrable experience of developing and delivering, successful innovative solutions and initiatives that underpin strategic goals and benefit the institution and the community.
- Evidence of partnership and collaborative working within and across organisational boundaries, strategic goals and benefit the institution and the community.
- Senior leadership experience with responsibility for significant and complex research strategy area.
- Experience of leading on an extensive teaching and learning portfolio, including graduate and post graduate programme and teaching delivery in a higher education setting.
- Distinguished international record of scholarship and research.

## Knowledge and Skills

- Demonstrable ability to think and operate strategically across a large and complex institution, within the sector and wider economic context.
- Proven ability to think critically, arrive at solutions and implement appropriate change initiatives, process and policy decisions at an organisational level.
- Exceptional understanding of the higher education context, national and international policy and sector climate, wider economic and social environment. to commercial success in the £millions.
- Proven influencing skills and the ability to represent the academic and strategic interests with BSBI members, students, staff, partners, community leaders, alumni and a wide range of stakeholders.
- Proven ability to lead senior teams through change to effective delivery, drawing on experience and change management methodologies to embed sustainable change.
- Ability to build persuasive, evidence-based proposals and seek and analyse insight to make informed decisions.
- Excellent negotiating, facilitating and relationship building skills.
- Ability to work as part of an executive leadership team in a dynamic and diverse environment and the ability to work within the culture of a high-performing college/university.
- Empathy and understanding of all facets of the BSBI's activities, wider community, broader than the core academic portfolio. Plus, clarity and positive reinforcement of how all parts of the BSBI contribute to overall success, the quality of campus life and work for staff, students and partners.
- A natural authentic leader with the ability to influence, motivate and take accountability with a strong sense of drive and commitment to purpose.
- Personal and professional commitment to the BSBI community, purpose, culture, vision and values.





---

# A great place to work

---

## What we offer

- A supportive and inclusive work environment.
- Opportunities for professional growth and development.
- Flexible work arrangements.
- The chance to contribute to a growing organisation making a positive impact.
- Access to monthly discounts on different online stores and services.
- Weekly German classes.
- Special discount on our degree programmes for employees and family members.
- Health Budget that gives access to different treatments (such as dental care) available after successfully completion of probation period.

---

# Remuneration

---

Competitive salary plus bonus

---

## How to Apply

---

The Berlin School of Business & Innovation have engaged the services of FE Associates to assist with the recruitment of the next Provost.

Interested parties are encouraged to have an initial and confidential discussion with Jo Johnston, our lead consultant.

Email  
[Jo.Johnston@fea.co.uk](mailto:Jo.Johnston@fea.co.uk)

Once it is agreed for you to proceed with an application, the lead consultant will schedule a first-stage interview via Teams with you which will take place before the closing date and will be recorded. Once this interview has been scheduled, you should submit your application.

Applications will be via a current CV and a two-page letter of application, ensuring you respond to the criteria as set out in the person specification.

In addition please complete our equality and diversity monitoring form which can be downloaded from the microsite.

Application documentation (CV, letter of application and equality and diversity monitoring form) should be submitted by email to [Recruitment@fea.co.uk](mailto:Recruitment@fea.co.uk) before the closing date.

### **Closing date for applications:**

9am on Tuesday 13 May 2025.

**Interviews** to take place during the week commencing Monday 26 May 2025.



**BERLIN SCHOOL OF  
BUSINESS & INNOVATION**

Berlin School of Business and Innovation  
is part of GUS Germany GmbH (GGG)

**FEA**

**FE ASSOCIATES**